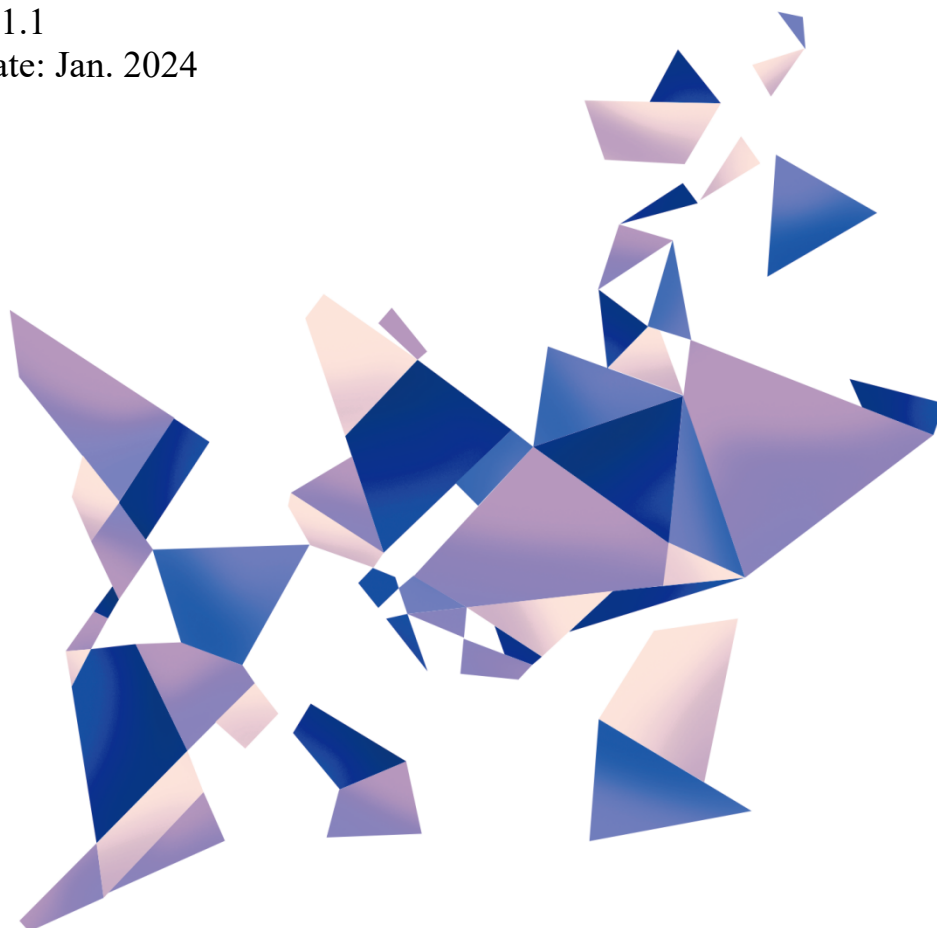


LA800

Intelligent Control Server

Version: v1.1

Release date: Jan. 2024



Specifications



TEL 400 159 0808
Web: www.kystar.com.cn

Beijing KYSTAR Technology Co., Ltd.

Professional Ultra HD Video Display
Control system integrated solution and service provider

Version record

version number	change details	Release time
V1.0	first release	2023.6.25
V1.1	Change resolution	2024.01

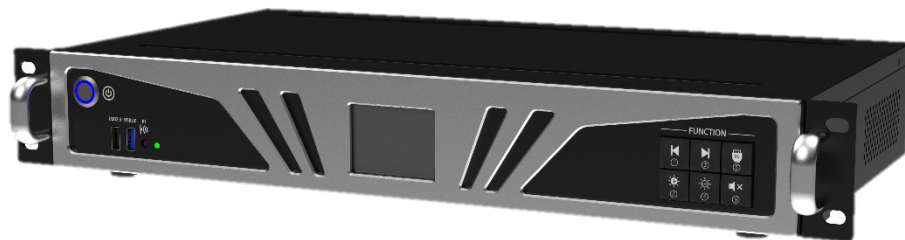
Product Specifications LA800 – Intelligent Control Server

Product Overview:

Kystar LA800 intelligent control server is an integrated system, including receiver card functions, image processor, projection software, and cloud service (Kares cloud).

The system supports a wide range of video inputs, which can mix and edit external signals as well as internal configurations. Four gigabit LED network ports and HDMI output ports, which can be connected to external monitors, or connected to peripheral devices such as USB keyboards and mice, can be used as computer servers for editing and playback, and can also be controlled by PE software, mobile devices, Kares cloud services, and more. The input/output device sends the program and can control playback.

Support different display dual screen, editing and playback do not affect each other; support remote control, simple and fast.



Features:

- The device integrates 8 Gigabit network ports, does not require an external transmitter card and supports all Kystar receiving card lines;
- Equipped with Kommander OS system and very professional multimedia processing capabilities, it can easily complete playback and visually arrange high-resolution videos, audio, images patching other media files;
- Supports wide/high output up to 15,360pixel/ 8192 pixels, customizable.
- Support 3 image layers, adjust the layer size, support 128 preset scenarios.
- Multiple external signals can be accessed with DVI*1, HDMI*3 ports;
- Support external signal source and internal configuration for mixing editing;
- Support wireless control through APP on mobile phones and tablets, and support dual mode WIFI STA and

WIFI AP to work at the same time, as a WIFI access point and access to other wireless networks at the same time;

- The software supports different ways of connecting network ports and wireless WIFI connections to control the connection with peripheral devices;
- Support fast data entry via USB;
- Adjust the brightness over time, support external brightness sensor, can automatically adjust the screen brightness according to the environment;
- Kares cloud system can be accessed through wired network, WIFI, 4G and other ways to realize multi-network cluster remote control;
- Supports editing and storing multiple programs, and sets the playback time to perform unattended playback;
- The main screen and the side sub-screens are different, and the program editing does not affect the playback output at the same time, which works in real time;
- Support remote control operation, TV simulation remote control operation, easy to use, fast switching;
- Support PPT playback with many special effects;
- Supports wireless projection function.
- Slideshow software supports English, Vietnamese, used on both Windows and MacOS

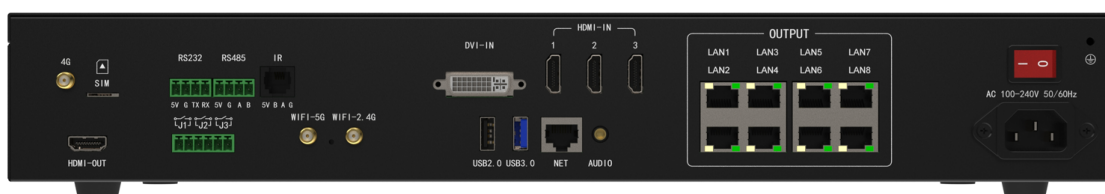
Panel Description

Front Panel



Order Number	Function Description
1	USB port, 2.0*1, 3.0*1
2	Remote Control Infrared Receiver
3	Indicator light, green light is always on during normal operation, and red light is always on in standby mode
4	Switch Button
5	Full color LCD information screen
6	Change the program, increase the brightness (+), decrease the brightness (-), switch the input signal, mute the sound

Rear Panel



Signal Receiving Ports		
Kind	Amount	Parameter
DVI-D (24+1)	1	<ul style="list-style-type: none"> Supports up to 1920×1080@60Hz resolution, backward compatible Compatible with HDMI1.3 and lower, EDID version 1.3
HDMI(TYPE A)	3	<ul style="list-style-type: none"> Supports up to 1920×1080@60Hz resolution, backward compatible Compatible with HDMI1.3 and lower, EDID version 1.3

Output Ports		
Kind	Amount	Parameter
LAN (công mạng Lan)	8	8 Gigabit Ethernet network ports, which can support all Kystar receiving card classifications, no need for an external transmitter card that supports up to 5.2 million pixels
HDMI(TYPE A)	1	1920×1080@60Hz resolution, and an external monitor can be used as an operation console
1/8" TRS Audio	1	Jack âm thanh 3.5mm, 2.0Vp-p / 10 KΩ

Other ports		
Kind	Amount	Parameter
USB	1	USB2.0*1 3.0*1, support external USB, mouse, keyboard and other peripherals
NET	1	Gigabit interface network port to connect to the network
J1-J3	3	Relay interface, external power switch can be controlled DC: maximum voltage 30V, maximum current 3A AC: max voltage 250V, max current 3A Note: DC power is recommended. AC power should not be controlled directly by a relay. If you need to control AC power, it is recommended to use the wiring method as shown in the figure below.

Wifi	2	Dual-band WIFI antenna interface, support 2.4G and 5G signals at the same time
IR	1	RS485 interface, can be used for external infrared expansion module (module need to be purchased separately)
RS232	1	RS232 interface, can be used for external GPS module (module need to be purchased separately)
RS485	1	RS485 interface, can be used for external brightness/temperature and humidity sensor interface (module needs to be purchased separately)
4G	1	4G Antenna Interface
SIM	1	SIM card slot, full Netcom, support three major carriers

Specifications

Performance Parameters	
Hardware performance	4-core A55 ARM processor, clocked at 1.8GHz. – Support H.264, H.265 4K@60Hz video decoding
Memory	32GB memory (25G available), support TF card to expand ROM memory
Load	Single-load network port 650,000 pixels, the whole machine can load 2.35 million pixels, the maximum horizontal is 3840 pixels, the maximum height is 2000
WIFI connection distance	20m (no obstacles)

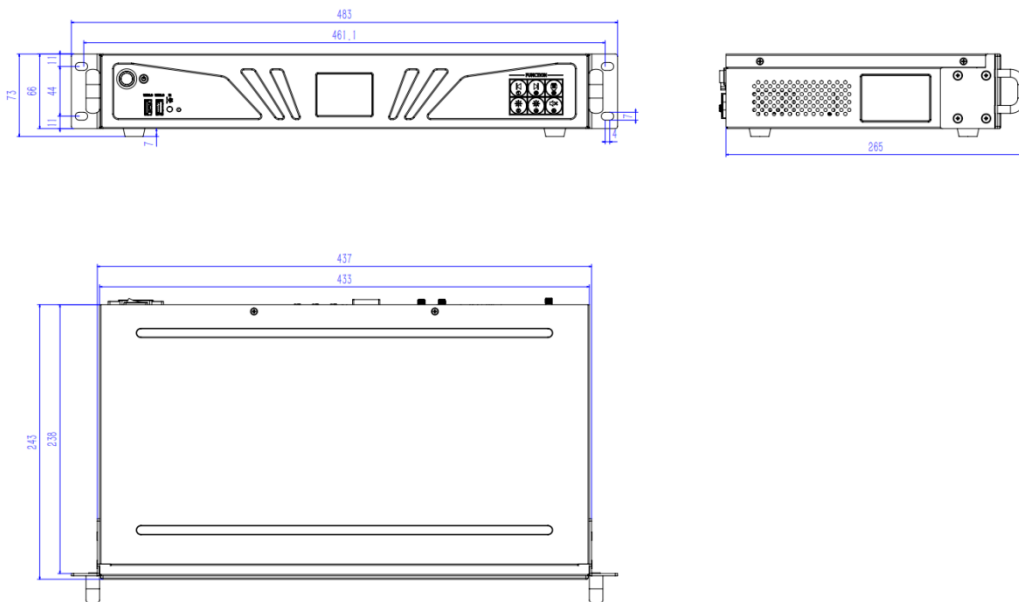
Supports multimedia formats	
Video Format	AVI, WMV, MPG, RM/RMVB, VOB, MP4, FLV and other popular video formats; Can support playback of multiple videos at the same time
Audio Format	MPEG-1 Layer III, AAC etc.
Image Format	Support bmp、 gif、 jpg、 png etc
Text	Single-line text, static text, multi-line scrolling text, office tasks, etc.
Clock	Real-time clock, multi-zone clock display and management

OSD	Support 32-bit true color OSD, can be displayed in any position, support video/text mixing, can overlay graphics on video.
-----	--

Machine Parameters	
Dimension	1.5U Standard Chassis
Receiving Card Support	Maximum distance of Kystar receiving card
Power Input	AC power supply 100-240V
Rated Power	30W
Operating Temperature	-20°C -60°C
Humidity(%)	5%-95%

Addendum:

Device Dimensions



Remote Control Instruction Manual

